

## ↻ IMPORTANT INFO ↻

### **University Programs:**

- Applications for admission of ABE students into UP programs for Fall 2001 and for UP students (general studies) into specific programs will be accepted beginning Nov 15.
- \$200 tuition deposit due on Wednesday, Dec. 6 for Spring 2001 courses. **Please be aware that this fee cannot be deferred under any circumstances.**
- Last day of class for Fall 2000 semester is Wednesday, Dec 6.
- Exam period is Dec 11-20.

### **Upgrading:**

- Applications accepted for admission into UP programs for Fall 2001 will begin Nov 15.
- Registration for Term 2 returning students starts on Monday, Dec 4.
- Registration for Term 2 new students starts Monday, Dec 11.
- Term 1 classes end on Friday, Dec 15
- Term 2 classes begin Tuesday, Jan 2.

### **Campus Closure**

- Christmas break is from Dec 22 to Jan 1. Campus re-opens on Tuesday, Jan 2.

**Happy Holidays to all!**

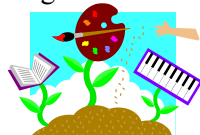
## CAMPUS EVENTS

### **First Nations University Prep**

A new part-time course is being offered to help you get ready for university. You will learn study skill, organization skills, communication skills, coping skills, and career exploration/educational planning skills. The course starts on Jan 8 and runs until April 4 on Mondays and Wednesdays from 11 am to 1 pm. The only requirement is that you have or will have English 12 (067) by **June 30, 2001**. To apply, drop by to see Vicki Noonan in Credit Programs, Mondays or Thursdays from 11 to 1, or call 746-3565.

### **Bookstore Open House**

Customer Appreciation Day on Monday, Dec 4 ~ pop in for coffee and treats and have a look at the great specials: 20% off all clothing, gifts, and general reading material; 10% off art supplies.



### **Textbook Buyback**

Watch for notices at the Bookstore for dates for end-of-term textbook buybacks.

The rep sets up in the main foyer, outside the bookstore.

### **Call for Submissions**

Students at Cowichan campus can make submissions to *Portal Magazine*, produced at the Nanaimo campus, by dropping them off at Information Services. Be sure to mark the envelope "Attention: Rhonda Bailey." Submissions can include poetry, fiction, interviews, photos, drama, creative non-fiction, microfiction, comics, etc., etc...

### **Fall 2000 Exams**

The exam timetable is posted on the Registration bulletin board beside the Information desk. Good luck to all students writing exams!

### **Bachelor of Education**

John Boland, Educational Advisor, will be available on campus to see students



planning a Bachelor of Education degree on Tuesday, Dec 5, from 8:30 am to 2:30 pm. Please book an appointment to see John at Student Services or call 746-3509.

### **Malaspina Online**

Did you know that you can get information about new courses via the Internet? Contact the Advising Centre by going to <http://web.mala.bc.ca/advising> and click on "What's New?" Online advising is also available. To register online or search for courses, go to [www.mala.bc.ca/www/reg](http://www.mala.bc.ca/www/reg). If you don't have Internet access from home, you can use the computer labs on campus.

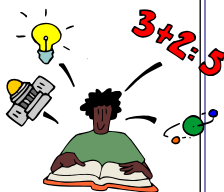
The Library has posted some really good information on citing sources. The concepts include style guides (MLA, APA, CBE, Online, Essay) and basic citation samples (books, chapters in books, journal articles, internet webpages). This is a great resource and is only 4 pages. Check it out at <http://web.mala.bc.ca/library/researchskills/citesources.htm>

**PLAGIARISM**

When writing an essay, it is very important to use your own words. When you borrow from a source, you must not "plagiarize" or pretend that the words or ideas are your own if they are not. The OWL On-line Writing Lab at Purdue University ([http://owl.english.purdue.edu/handouts/research/r\\_paraphr.html](http://owl.english.purdue.edu/handouts/research/r_paraphr.html)) has a good handout on paraphrasing, a way of writing your own rendition of someone else's ideas. It describes paraphrasing, tells why it is a valuable skill, gives six steps to effective paraphrasing, gives examples, and provides an exercise. Plagiarism is considered to be academic misconduct, and the University-College reserves the right to suspend or take legal action against any student who is caught plagiarising.

**EXAM TIP**

At the beginning of the exam, write down on scrap paper or the back of the exam everything you remember: formulas, facts, names, dates, etc.; scan the test and then do this a second time before beginning to answer the questions. This frees your mind up from trying to retain that information and lets you concentrate on the questions.

*(Continued from page 1)***Math Tutoring**

A volunteer tutor comes to Room 128 on Tuesdays at 3:15. If no one shows up by 3:30, he leaves; if anyone comes, he will stay until 5:00.

**Snow**

Listen to the local radio stations for information. If you call the campus switchboard, you will be advised to listen to the radio. Closure is a local decision; don't assume that this campus will close when Nanaimo campus closes.

**Campus Closure**

Christmas break is from Dec 22 to Jan 1. Back to classes on Tuesday, Jan 2.

**Embracing Diversity 2000**

Planning meeting Monday, Dec 11, noon to 1:30, Building 200, Room 224, Nanaimo Campus. Any member of the Malaspina University-College community is invited to help determine the focus of this human rights event...bring your ideas about what is needed to embrace diversity in our campus environment.

**Study Skills Workshop**

Only one left! To learn about forming a study group for next term, come to Room 129 at 1:30 on Wednesday, Dec 13.

**Choir**

The Malaspina Choir will be performing Bach's Christmas Oratorio (abbreviated form) at the Port Theatre, Nanaimo, on Sat., Dec 2 at 7:30 and Sun., Dec 3 at 2:00. Tickets are \$18 and \$20, and can be bought at the Port Theatre Box Office: 754-8550

**COMMUNITY EVENTS****Christmas Hamper & Toy Registration**

Registration is for families or individuals who would like a Christmas hamper and who are on a low or fixed income and have a telephone prefix of 701, 715, 746, or 748 (or a Duncan address). Please bring a BC CARE card for each member of the family and a proof of address (bills, etc.) Toys are available for children in the immediate family who are under 12 years of age. Go to School House Square on Charlotte



Road near the Farmer's Market until Dec 16, between 11 am and 3 pm from Mondays to Saturdays.

**Free Winter Coats**

If you need a new winter coat to keep out the cold, go to School House Square on Charlotte Road near the Farm and pick one up for you or your kids. To drop off coats for donation, go to Little Caesar's Pizza in the Cowichan Plaza.

