



THE MEDL ROADMAP: AN ORIENTATION FOR MASTERS STUDENTS IN EDUCATIONAL LEADERSHIP

Authors: Harleen Kaur Kalra, Nova Heartland, Stesi Jose Thoppil

LITERATURE REVIEW



Zhou and Zhang (2014)

International New Students

- Help first-year students feel supported and appreciated by the institution
- Enrich students' social integration and overall school experience
- Benefit school by strengthening student satisfaction and enrolment retention

Owusu et al. (2014)

Correlational Study

- Reduce first-year international students' dropout rates
- Academic performance is positively impacted by participation in orientations
- Study suggested a strong and positive significant correlation between orientation participation and students' CGPA scores ($r = .74, p = .002$)

Sullivan (2021)

New Student Transition

- Positively impacts entry transition into the academic institution
- Induce familiarity with new campus and school services
- Help students build connections, promote their confidence and preparedness

Colucci and Grebing (2020)

Online Orientations

- Increased student preparedness, confidence, engagement
- Increased course retention rate from 71.8% to 79.5%
- Correlation exists: online orientation, performance, retention, student success

WHO

Master of Education
Leadership (MEDL)
Year 1 Students

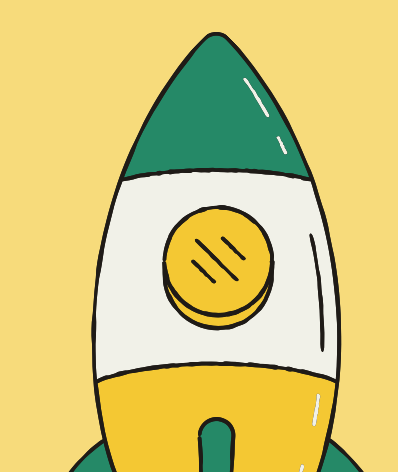
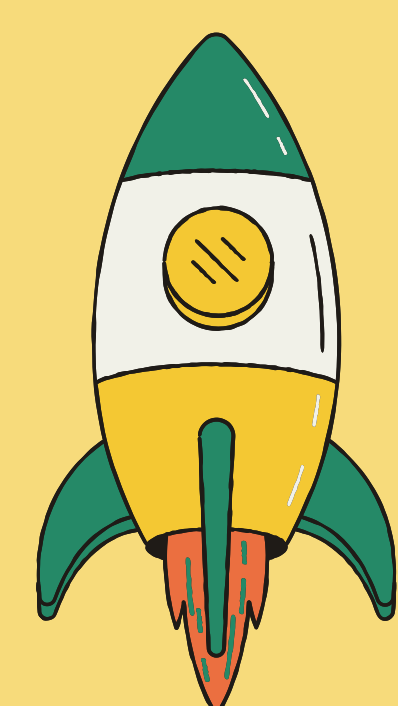
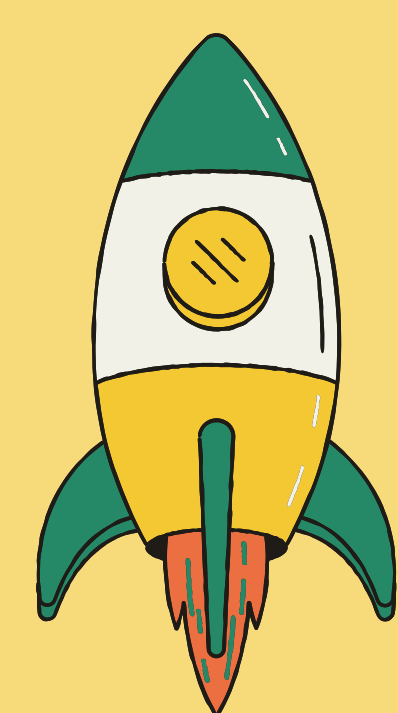
WHERE AND WHEN

NANAIMO
& ZOOM

3 DAYS
3 HRS/DAY

2 WEEKS
PRE-PROGRAM

WHAT



For MEDL Students

- Comprehensive pre-program orientation
- Student-led and faculty-guided event
- Introduce program and research expectations
- Share school and industry resources
- Nurture community and belonging
- Cultural adjustment for international students

For Faculty and VIU

- Help promote a good first impression
- Connect faculty and students pre-program

For Student Facilitators

- Create impactful leadership opportunities
- As senior students, help mobilize knowledge

TOPICS COVERED

DAY 1

- Program Overview
- Funding, Finances and More

DAY 2

- Student Services
- Campus Tour

DAY 3

- Research and Thesis planning
- Industry and Scholarly Activities

EXAMPLE PROGRAM OVERVIEW

- Course and Faculty Information
- MEDL Program Timeline
- Program and Degree Expectations
- APA Academic Writing Support
- Professional Goals Awareness
- Research and Thesis planning
- Industry and Scholarly Activities